

L163VDC4P

1.6~3.4mm F1.4 – CS-Mount

Compatible with 1/3" & 1/4" Cameras

Focal Length: 1.6~3.4mm

Max. Relative Aperture: 1:1.4

Iris: F1.4~Approx. F360
With ND Spot Filter

Angular Field of View: 1/3": 180.0° × 114.1° at 1.6mm
84.3° × 55.8° at 3.4mm
1/4": 140.0° × 88.9° at 1.6mm
67.4° × 43.5° at 3.4mm

Min. Object Distance (M.O.D.): 0.05~0.2m (From Front Vertex)

Optical Back Focal Distance: 7.06~11.54mm (In Air)

Operation: Zoom: Manual
Focus: Manual
Iris: IG (Auto-Close System)

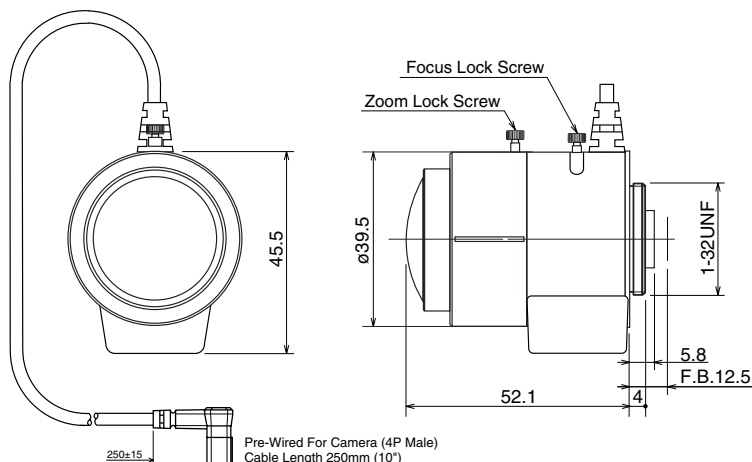
Operation Voltage: Close to Open: Less than 3V
Open to Close: More than 0.5V

Operation Temperature: -10 ~ +50°C (+14 ~ 122° F)

Filter Size: None

Mount: CS-Mount
(Adjustable Lens Position)

Size, Approx. Weight: 39.5 × 45.5 × 52.1mm (w/h/d), 105g
(Approx. 1.6 × 1.8 × 2.1in., 3.7oz.)



Camera Connector Wiring



Pin	Signal
1	Brake – *
2	Brake + *
3	Drive +
4	Drive –

* Also referred to as DAMP, CONTROL, or DUMP

L212AVDC4PIR (Aspheric)**DAY NIGHT IR**

2.7~12mm F1.2 – CS-Mount

Compatible with 1/3" & 1/4" Cameras

Focal Length: 2.7~12mm

Max. Relative Aperture: 1:1.2

Iris: F1.2~Approx. F360
With ND Spot Filter

Angular Field of View: 1/3": 97.4° × 72.4° at 2.7mm
23.8° × 17.8° at 12mm
1/4": 72.4° × 55.5° at 2.7mm
17.8° × 13.5° at 12mm

Min. Object Distance (M.O.D.): 0.3m (From Front Vertex)

Optical Back Focal Distance: 7.13mm (In Air)

Operation: Zoom: Manual
Focus: Manual
Iris: IG (Auto-Close System)

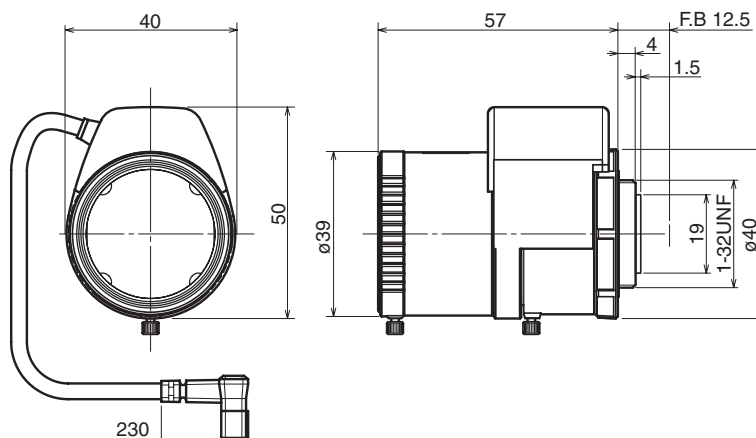
Operation Voltage: Close to Open: Less than 3V
Open to Close: More than 0.5V

Operation Temperature: -10 ~ +50°C (+14 ~ 122° F)

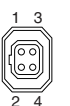
Filter Size: None

Mount: CS-Mount
(Adjustable Lens Position)

Size, Approx. Weight: 40 × 50 × 57mm (w/h/d), 72g
(Approx. 1.6 × 2.0 × 2.2in., 2.5oz.)



Camera Connector Wiring



Pin	Signal
1	Brake – *
2	Brake + *
3	Drive +
4	Drive –

* Also referred to as DAMP, CONTROL, or DUMP

