

NXWBS Heavy duty bracket with joint, made of AISI 316 thick gauge stainless steel. The rotation of the joint along the vertical and horizontal axes allows a wide range of positions. It is particularly suitable for stainless steel weather-proof housings. It can be completed with NXCW and NXCOL pole and corner mount adaptors.

NXWBL Heavy duty wall bracket with joint for NXL housing. Made of AISI 316 thick gauge stainless steel. The rotation of the joint along the vertical and horizontal axes allows a wide range of positions. It can be completed with NXCW and NXCOL pole and corner mount adaptors.

NXWBPTH Heavy duty bracket, made of AISI 316 thick gauge stainless steel. It is particularly suitable for stainless steel Pan & Tilt motors. It can be completed with NXCW and NXCOL pole and corner mount adaptors.

NXFWBT Parapet mount for NXPTH P&T serie made of AISI 316 thick gauge stainless steel. It can be coupled with the NXWBPT wall bracket.

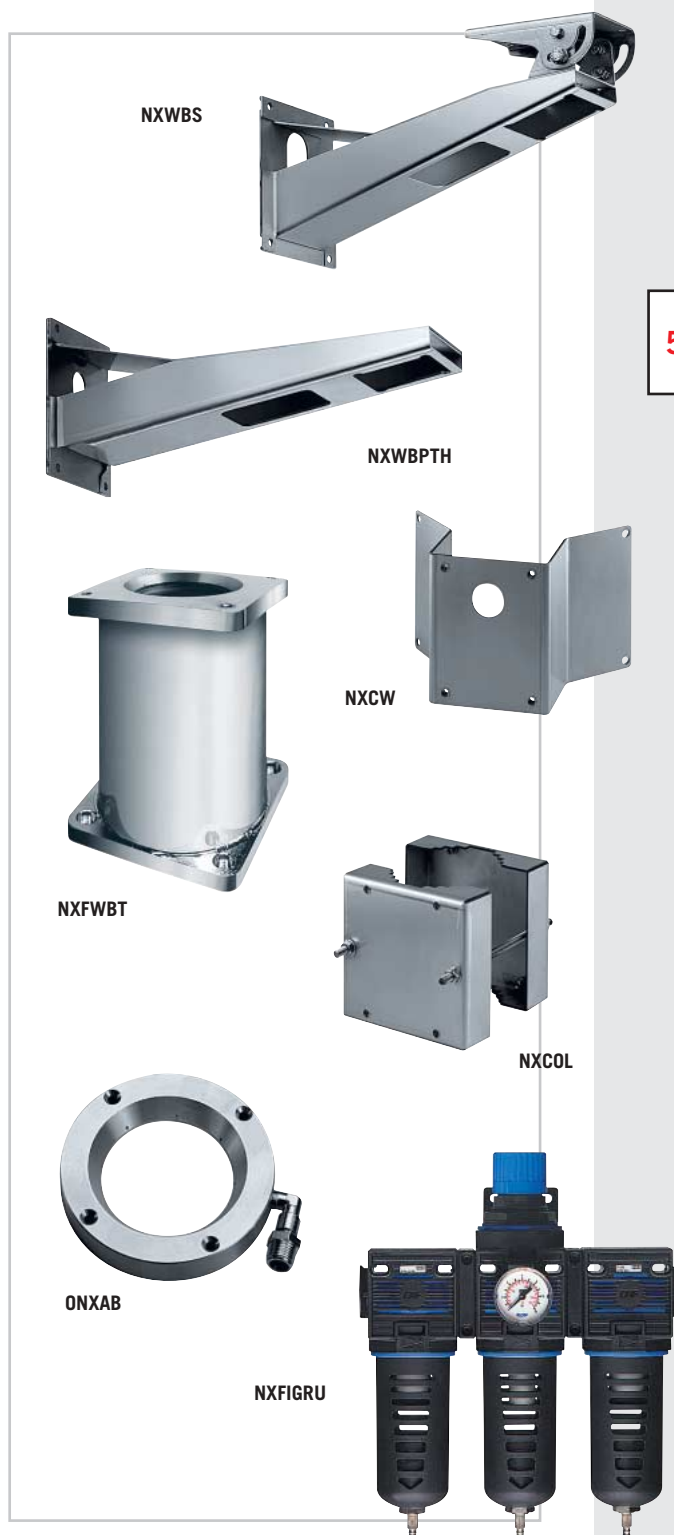
NXCW Corner mount adaptor, made of AISI 316 sheet steel. Suitable for NXWBS and NXWBPTH brackets.

NXCOL Pole mount adaptor, made of AISI 316 sheet steel. Suitable for NXWBS and NXWBPTH brackets.

ONXAB Flange designed to create an air barrier in front of the glass, preventing the formation of dust deposits. It also attenuates the heat on the housing NXW. It is supplied standard on NXW housing and optional NXM housing.

NXFIGRU Air filtering group, to be coupled with ONXAB, purifies the air drawn by a compressor.

- Indoor/outdoor installation
- Stainless Steel AISI 316

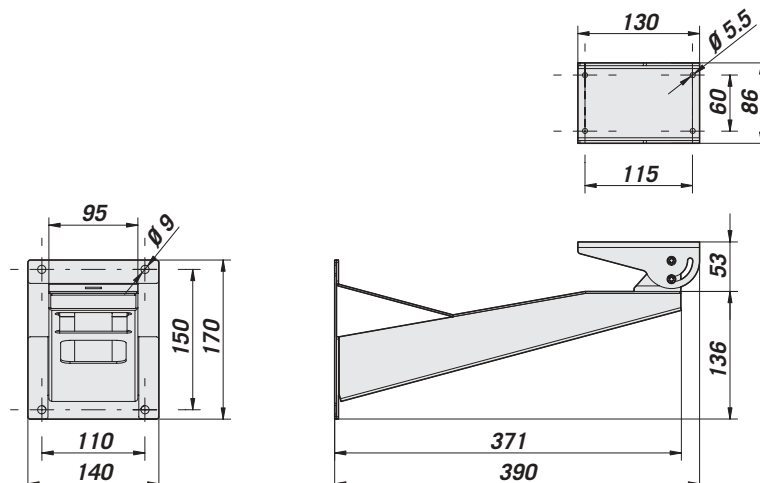




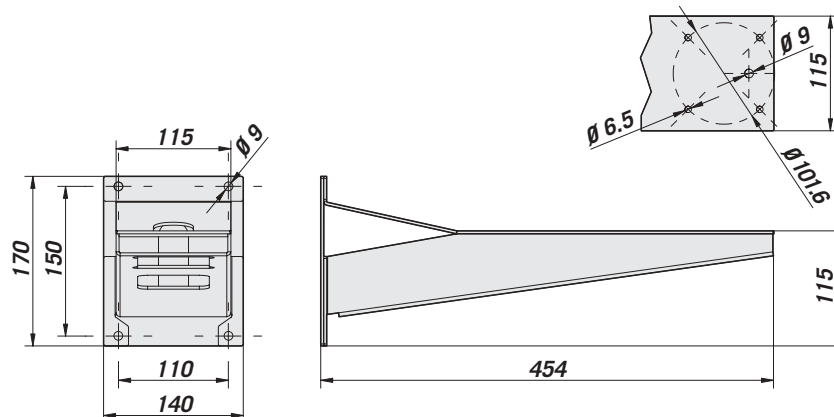
BRACKETS AND STEEL SYSTEMS CHART

	WALL			PARAPET
	NXWBS	NXWBPTH	NXWBL	NXFWBT
HOUSINGS:				
NXM	•			
NXW	•			
NXJ	•			
NXL			•	
P&T:				
NXPTH		•		•
MODULAR ADAPTERS:				
NXCW	•	•	•	
NXCOL	•	•	•	

NXWBS

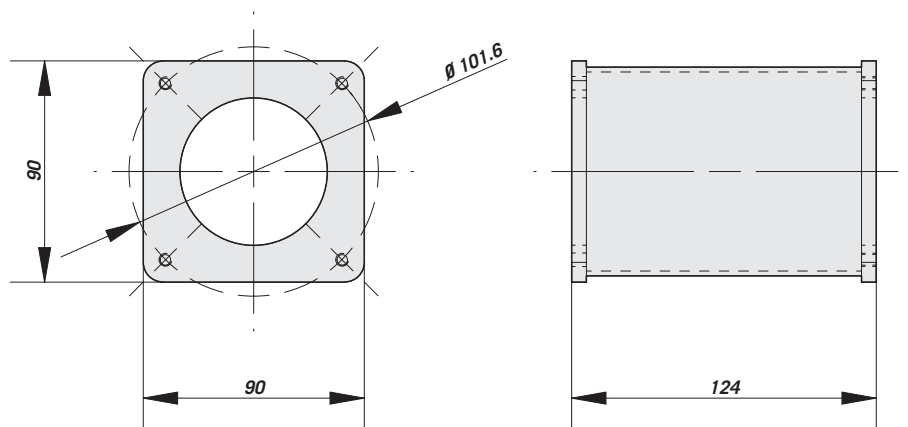


NXWBPTH

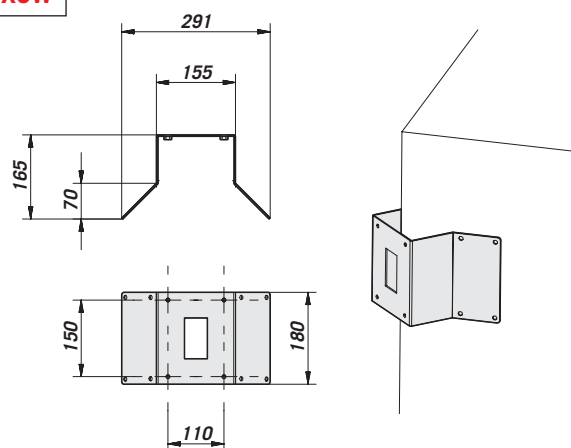


The values are in millimeters.

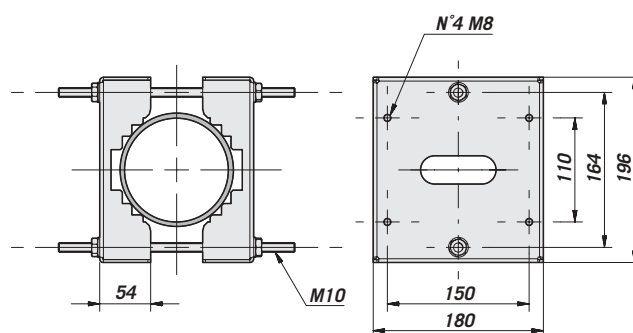
NXFWBT



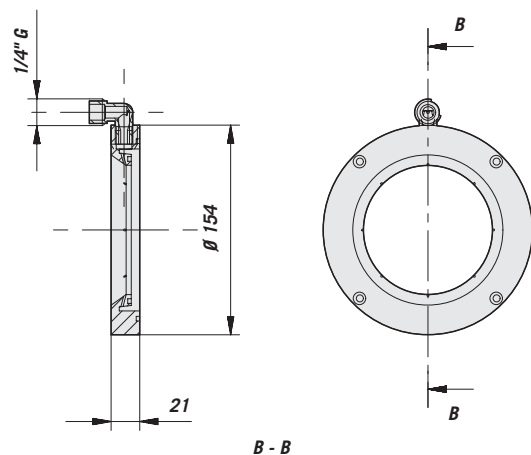
NXCW



NXCOL

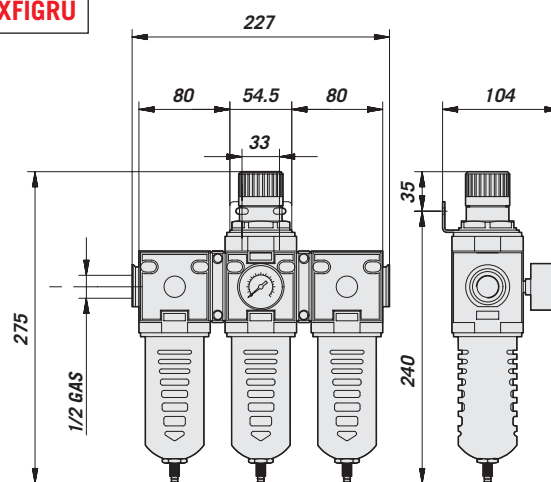


ONXAB1



The values are in millimeters.

NXFIGRU





TECHNICAL DATA

GENERAL

NXWBS

- Entirely made of polished AISI 316 stainless steel

NXCW

- Entirely made of polished AISI 316 stainless steel

NXCOL

- Entirely made of polished AISI 316 stainless steel

NXWBPTH

- Entirely made of polished AISI 316 stainless steel

NXFWBT

- Entirely made of polished AISI 316 stainless steel

ONXAB - ONXAB1025

- Entirely made of polished AISI 316 stainless steel
- Standard on NXW housing and optional NXM housing

NXFIGRU

- 3 filters in cascade (20 micron, 5 micron, 0,1 micron)

MECHANICAL

NXWBS

- Wall installation
- Length: 370 mm (14.5 in)
- Load rating: 45 kg (99 lb)

NXCW

- Corner installation
- Dimensions: 180x295 mm (7x11.6 in)
- Load rating: 50 kg (110 lb)

NXCOL

- Pole installation
- Dimensions: 170x190 mm (6.7x7.4 in)
- Load rating: 50 kg (110 lb)
- Pole: Ø 110-150 mm (4.3-5.9 in)

NXWBPTH

- Wall installation
- Length: 454 mm (17.8 in)
- Load rating: 70 kg (154 lb)

NXFWBT

- Parapet installation or on NXWBPTH wall bracket
- Height: 124 mm (4.9 in)
- Load rating: 70 kg (154 lb)

ONXAB - ONXAB1025

- Dimensions Ø 155x21 mm (6.1x0.8 in)
- Male input 1/2" Gas
- Max pressure 2,5 Bar
- Application example:
air pressure 1 Bar, consumption 7 m³/h
air pressure 1,5 Bar, consumption 10 m³/h
air pressure 2 Bar, consumption 12 m³/h
air pressure 2,5 Bar, consumption 14 m³/h

NXFIGRU

- Dimensions: 380x280x100 mm (14.9x11x3.9 in)
- Input and output: 1/2"
- Suggested pressure: 0,3-2,5 Bar
- Filtering: 0,1 micron

ENVIRONMENT

- Outdoor/indoor

**Unit Weight (kg / lb):**

NXWBS: 4 / 8.8
NXCW: 2,2 / 4.8
NXCOL: 3,3 / 7.2
NXWBPTH: 3,5 / 7.7
NXFWBT:
ONXAB1: 1,4 / 3.1
NXFIGRU: 2,5 / 5.5

Package Weight (kg / lb):

NXWBS: 4,3 / 9.4
NXCW: 2,6 / 5.7
NXCOL: 3,5 / 7.7
NXWBPTH: 3,8 / 8.3
NXFWBT:
ONXAB1: 1,6 / 3.5
NXFIGRU: 3 / 6.6

Package Dimensions (cm / in):

NXWBS: 16x18,5x46 / 6.2x7.2x18
NXCW: 23,5x31,5x24,5 / 9.2x12.4x9.6
NXCOL: 14x25,5x20 / 5.5x10x7.8
NXWBPTH: 16x18,5x46 / 6.2x7.2x18.1
NXFWBT:
ONXAB1: 14x25,5x20 / 5.5x10x7.8
NXFIGRU: 38x14,5x38,5 / 14.9x5.7x15.1

Master Carton (units):

NXWBS: 8
NXCW: 8
NXCOL: 8
NXWBPTH: 8
NXFWBT:
ONXAB1: 8
NXFIGRU: 8