



5-Port 10/100 Mbps PoE Switch

TPE-S50 (v1.0R)

- 4 x 10/100 Mbps PoE ports and 1 x 10/100 Mbps port
- 31 W total power budget
- 1 Gbps switching capacity
- Sturdy metal switch
- Plug and Play installation
- Use with a TRENDnet PoE Splitter to network and power non-PoE devices
- Limited Lifetime Warranty

The 5-Port 10/100 Mbps PoE Switch, model TPE-S50, delivers data and power over existing Ethernet cables to Power over Ethernet (PoE) devices such as Access Points and IP Cameras. The TPE-S50 offers four 10/100 Mbps PoE Ethernet ports and one 10/100 Mbps Ethernet port. It supports PoE (802.3af) devices with a 31 Watt power budget. Plug and Play this sturdy metal switch for reliable high speed PoE networking.



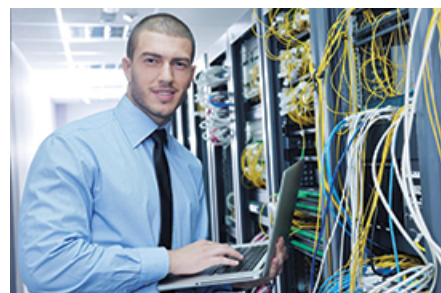
PoE Camera Flexibility

Automatically supply up to 15.4 Watts to standard 802.3af PoE devices.



PoE Power

A 31 Watt PoE power budget supplies up to four Power over Ethernet devices with PoE power.



Ethernet Networking

Five 10/100 Mbps Ethernet ports produce a 1 Gbps switching capacity to support edge network installations.

Networking Solution



LED Indicators



10/100 Mbps PoE ports

10/100 Mbps port



PoE

Supplies up to 15.4 Watts of PoE power per port with a 31 Watt power budget



Ports

Four 10/100 Mbps PoE ports and one 10/100 Mbps port



Switching Capacity

1 Gbps switching capacity



Housing

Rugged metal enclosure



LED Indicators

LED indicators convey port status

Specifications

Standards

- IEEE 802.3
- IEEE 802.3u
- IEEE 802.3x
- IEEE 802.3af (15.4 Watts/port)
- IEEE 802.3az

Device Interface

- 4 x 10/100 Mbps PoE ports
- 1 x 10/100 Mbps port
- LED indicators

Data Transfer Rate

- Ethernet: 10 Mbps (half duplex), 20 Mbps (full duplex)
- Fast Ethernet: 100 Mbps (half duplex), 200 Mbps (full duplex)

Performance

- Data RAM Buffer: 56 KB
- Switch Fabric: 1 Gbps
- MAC Address Table: 1 K entries
- Forwarding rate: 0.744 Mpps (64-byte packet size)

Special Features

- GREENnet energy saving technology

Power

- Input: 110 – 240 V AC, 50/60 Hz, 0.75 A
- Output: 48 V DC, 0.75 A

- Consumption: 36 Watts (Max.)

PoE

- PoE budget: 31 Watts
- Pin 4, 5 for power+ and pin 7, 8 for power- (mode B)

Operating Temperature

- 0 – 40 °C (32 – 104 °F)

Operating Humidity

- Max. 90% non-condensing

Dimensions

- 141 x 95 x 30 mm (5.6 x 3.7 x 1.2 in.)

Weight

- 337 g (12 oz.)

Certifications

- CE
- FCC

Warranty

- Limited Lifetime Warranty

Package Contents

- TPE-S50
- Quick Installation Guide
- Power adapter (48 V DC, 0.75 A)

TRENDnet offers a limited lifetime warranty for all of its metal-enclosed network switches that have been purchased in the United States/Canada on or after 1/1/2015. Cooling fan and internal power supply carry a one-year warranty.

